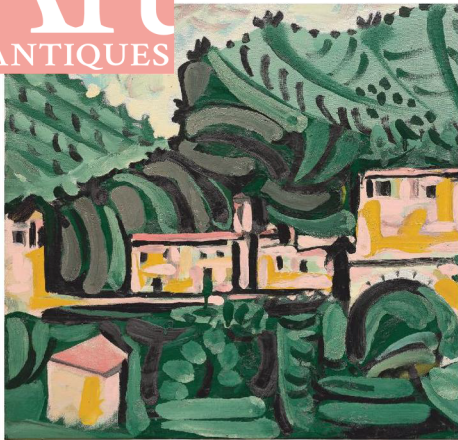


MARCH 2023

# Art & ANTIQUES

FOR COLLECTORS OF THE FINE AND DECORATIVE ARTS



OSWALDO VIGAS | JOHANNES VERMEER | KATSUSHIKA HOKUSAI | PRESTON SINGLETARY

PICASSO LANDSCAPES

## Cosmic Connection

ON MARCH 9, June Kelly Gallery in New York will open *Entanglement*, an exhibition of paintings by Sandra Lerner. The series focuses on the scientific concept of entanglement: the interaction of two particles at the cellular or subatomic level, or on a larger scale, of two entities as a cosmic event.



Lerner says in her artist statement, "Once they have interacted with each other, their behavior is intertwined forever, even though they might be separated by millions of miles. It's a form of communication that is central to the creative process. My paintings strive to heighten our awareness of our oneness with the universe."

The works are highly textured and rich in color; Lerner often includes many different shades of a primary hue in each image. In "Entanglement I," (2022) orange and yellow circular entities connect, seemingly across a beam of light, against a bright blue background containing moments of dark blue, violet, and sky blue.



"Entanglement II" (2020) places similarly colored entities against an orange backdrop, highlighted with lines of blue, brown, and yellow. With "Entanglement X" (2021), the setting is purple, featuring shades of yellow, black, white, and blue.

Each of the paintings com-

municates connection between two disparate things, which is a theme that is central to Lerner's overall art practice. "Taoist philosophy, cosmology, physics, and nature have informed my art and inspired my creativity and being," Lerner says.

